



**University of Duhok**  
**College of Science**  
**Department of Computer Science**

# Computer Skills

Windows

**Lecturer**  
**Sarwar M. Ali**

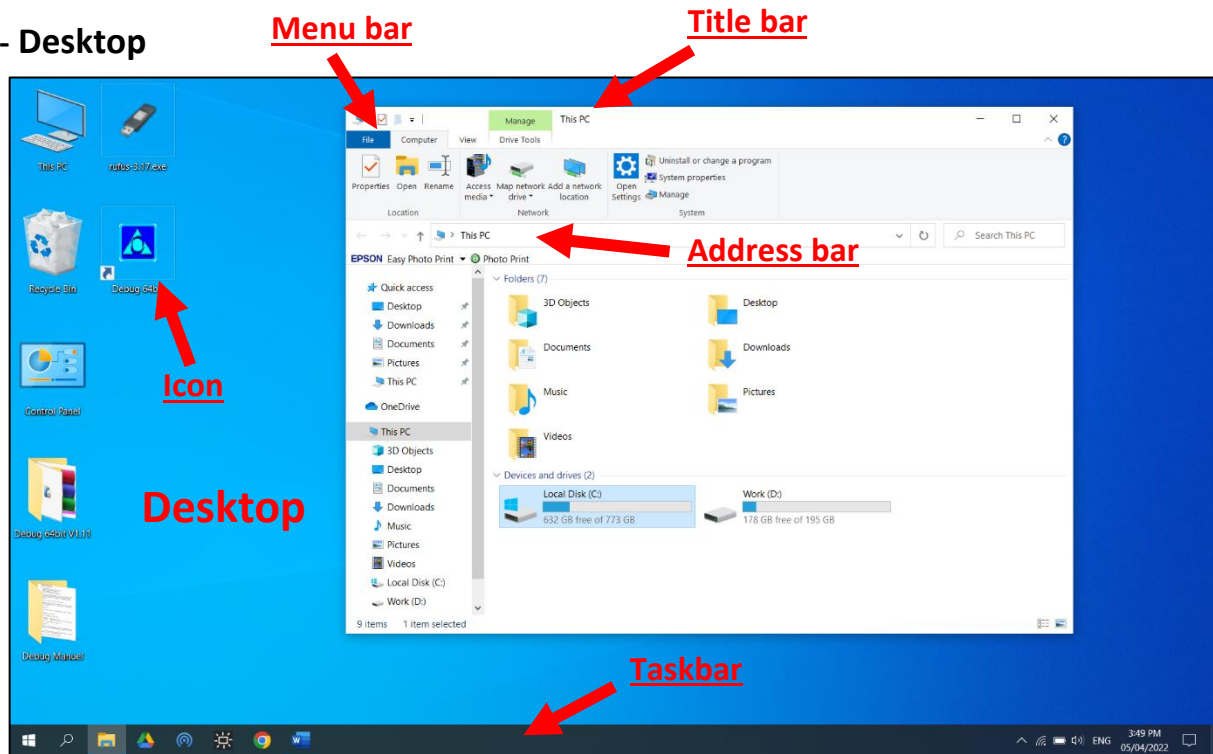
**2021-2022**

## Contents

Windows .....	2
- How to add/remove (This Pc, Recycle Bin, Control panel) icons on desktop. ....	2
- How to send applications' shortcut to desktop?.....	2
- How to pin applications to the (Taskbar or Start) .....	3
- How to create a folder? .....	3
- How to display system Information? .....	3
- Personalization .....	4
- Time and Language .....	5
- Mouse .....	6

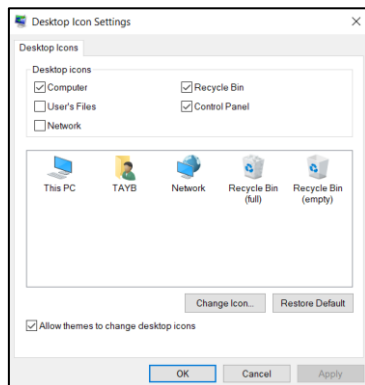
# Windows

## - Desktop



## - How to add/remove (This Pc, Recycle Bin, Control panel) icons on desktop.

1. go to start > setting > Personalization > Themes:  
on the right hand click on **Desktop icon settings** under Related settings



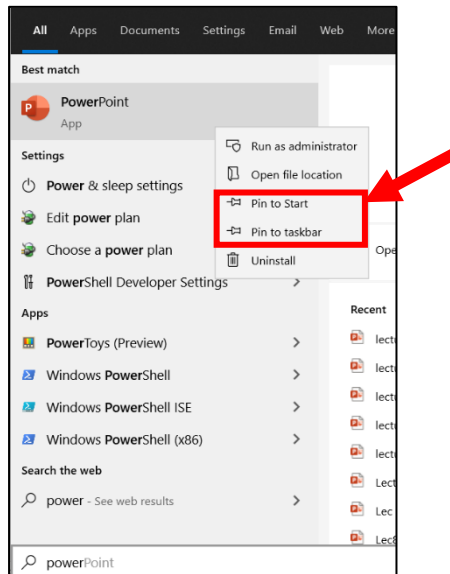
2. **Check** the icon which you want to add it to the desktop then press **OK**.

## - How to send applications' shortcut to desktop?

1. Go to **start** then search for the application you want to send it to desktop.
2. **Right click** on the application > open file location > **Right click** on the application > send to > Desktop (create shortcut).

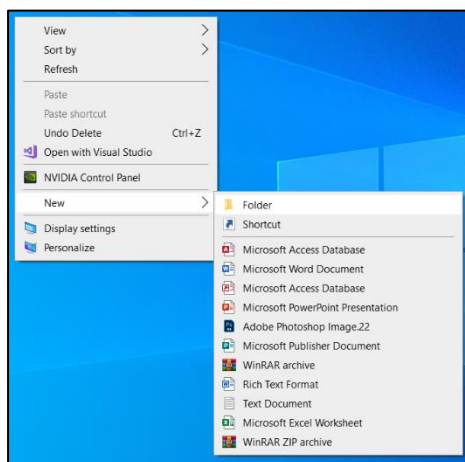
## - How to pin applications to the (Taskbar or Start)

1. Go to **start** then search for the application you want to pin it to (Taskbar or Start)
2. **Right click** on the application > click on (pin to Taskbar or Start).



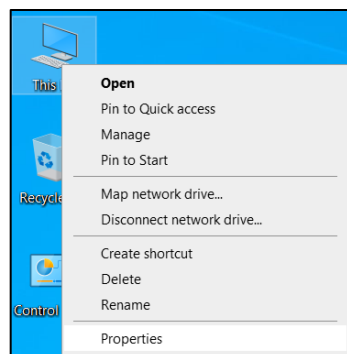
## - How to create a folder?

1. **Right click** > New > Folder or (Ctrl + Shift + N).



## - How to display system Information?

1. **Right click** on (This PC) > Properties. (General Information)



### About

Your PC is monitored and protected.

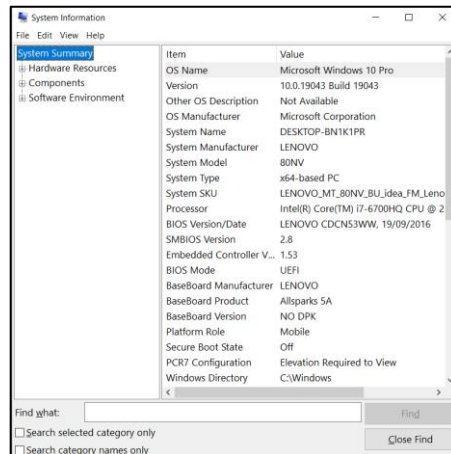
[See details in Windows Security](#)

### Device specifications

Device name	DESKTOP-BN1K1PR
Processor	Intel(R) Core(TM) i7-6700HQ CPU @ 2.60GHz
Installed RAM	16.0 GB (15.8 GB usable)
Device ID	0A8B514F-F4E9-4368-8693-CC7F5ECB82E9
Product ID	00331-10000-00001-AA335
System type	64-bit operating system, x64-based processor
Pen and touch	No pen or touch input is available for this display

[Copy](#)

## 2. Open **Run dialogue** (Windows + R) > Type (msinfo32) > OK. (Detailed Information)



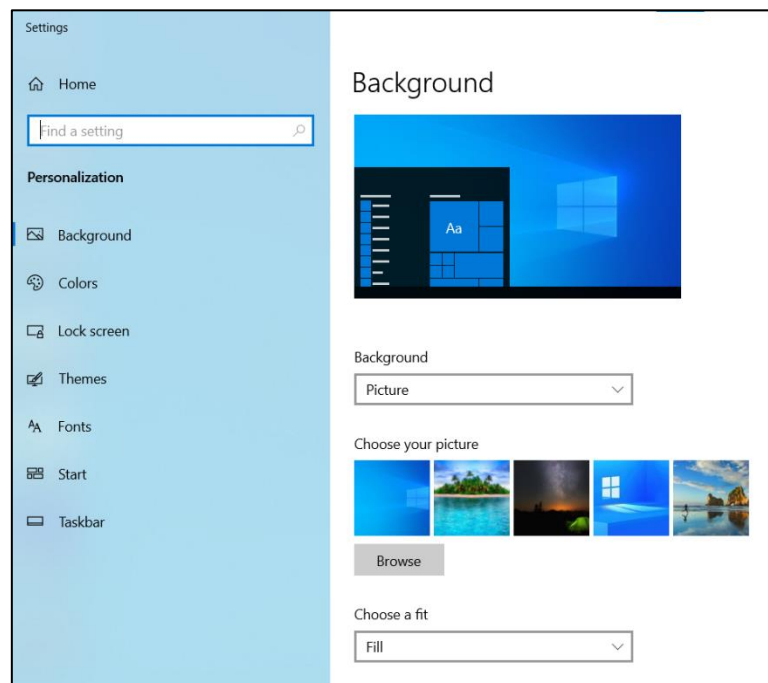
### - Personalization

#### - How to open (Personalization)?

- Go to **start** > Open settings > Personalization.

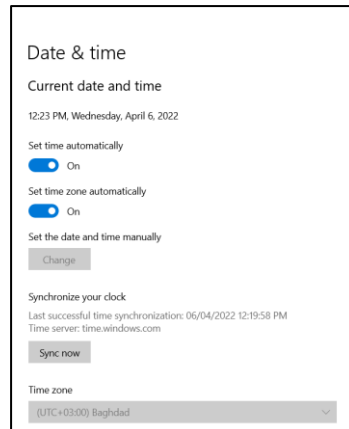
#### - What we covered in the lecture:

- Background.
- Colors.
- Lock screen.
- Theme.
- Taskbar.

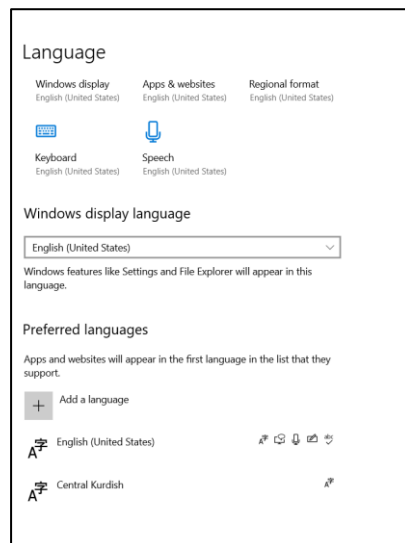


## - Time and Language

- Go to start open settings > Time & Language
  - Date & time (how to change date and time)

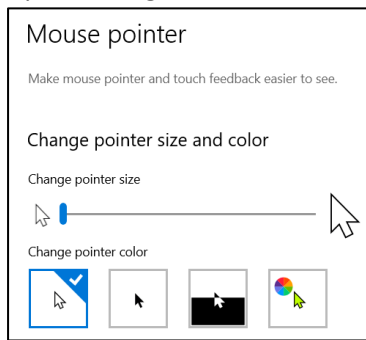


- Language (how to add or remove a language)

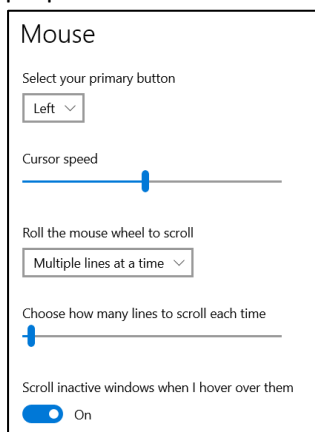


## - Mouse

- Open settings > Ease of Access > open (Cursor pointer) from the left side.



- Click on (additional mouse settings) under related settings to see the following mouse properties.



- Click on (additional mouse options) to see mouse properties in Control panel.

